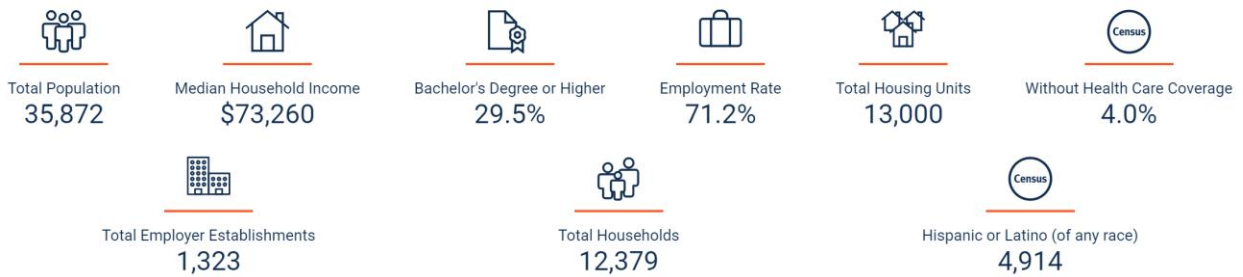


# 2022 COMMUNITY HEALTH STATUS REPORT - SIOUX COUNTY, IOWA

## DEMOGRAPHICS

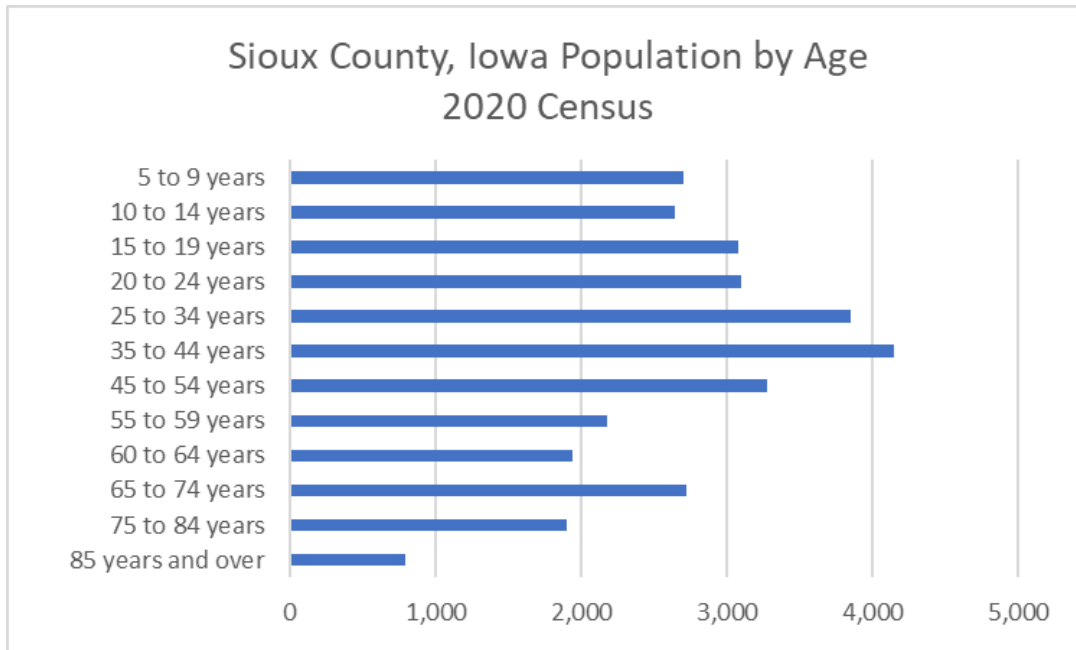
The total population of Sioux County is **35,872**. [1] This is a 6.43% increase in population since the 2010 census. In comparison, the state of Iowa population grew by 4.3% and the United States population grew by 7.13%.

### COUNTY SNAPSHOT



[HTTPS://DATA.CENSUS.GOV/CEDESCI/PROFILE?G=0500000US19167](https://data.census.gov/cedsci/profile?g=0500000US19167)

## AGE [1]



Percent population by age (2020 Census)	Sioux County	Iowa	Marion County (peer)
Under age 5	7.3	6.2	5.7
Age 5-9	7.8	6.4	6.0
Age 10-14	7.6	6.6	7.5
Age 15-19	8.8	6.7	7.7
Age 20-24	8.9	7.2	6.9
Age 25-34	12.1	12.6	10.6
Age 35-44	11.9	12.1	11.9
Age 45-54	9.3	11.9	12.7
Age 55-59	6.2	6.7	6.3
Age 60-64	5.6	6.5	7.1
Age 65-74	7.8	9.6	9.8
Age 75-84	5.4	5.0	5.0
Age 85 and over	2.3	2.5	3.0
<b>Total Population (#)</b>	<b>35,872</b>	<b>3,150,011</b>	<b>33,414</b>

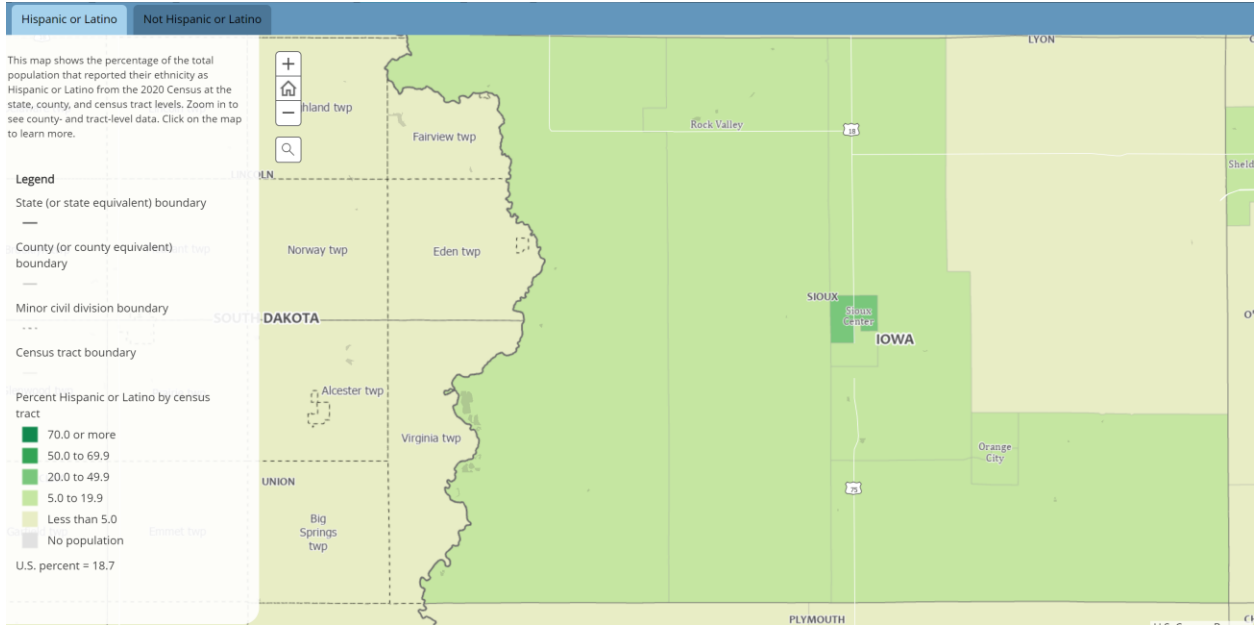
**GENDER DISTRIBUTION** [2]

	Sioux County	Iowa	Marion County
Female	17,314	1,585,575	16,613
Male	17,586	1,564,436	16,580
Female median age	35.2	39.4	40.9
Male median age	32.3	37.2	38.5

**RACE/ETHNICITY DISTRIBUTION** [1]

Between the 2010 census and the 2020 census, the Hispanic population of Sioux County grew by 64.75% while the non-Hispanic population grew by 0.83%.

	Sioux County	Iowa	Marion County
White	30,745 (85.7%)	2,824,197 (90.6%)	31,710 (95.7%)
Black or African American	195 (0.54%)	106,762 (3.4%)	198 (0.6%)
American Indian and Alaska Native	218 (0.61%)	10,791 (0.3%)	97 (0.3%)
Asian	224 (0.62%)	71,178 (2.3%)	378 (1.1%)
Native Hawaiian and Other Pacific Islander	5 (.01%)	2913 (0.1%)	0 (0%)
Other race, alone	2,241 (6.25%)	88,720 (2.8%)	217 (0.1%)
Two or more races	2,244 (6.26%)	62,734 (2.0%)	507 (1.5%)
Hispanic or Latino [1]	4,914 (13.7%)	215,986 (7%)	700 (2.1%)
Not Hispanic or Latino [1]	30,958 (86.3%)	2,955,893(93.96%)	32,455 (98.04%)



U.S. Census Demographic Data Map Viewer <https://mtgis-portal.geo.census.gov/arcgis/apps/MapSeries/index.html?appid=2566121a73de463995ed2b2fd7ff6eb7>

## URBAN AND RURAL AREAS [1]

In Sioux County, using the 2010 U.S. Census Bureau definition of urban, 49.18% of the population lives in an urban area while 50.82% is rural.

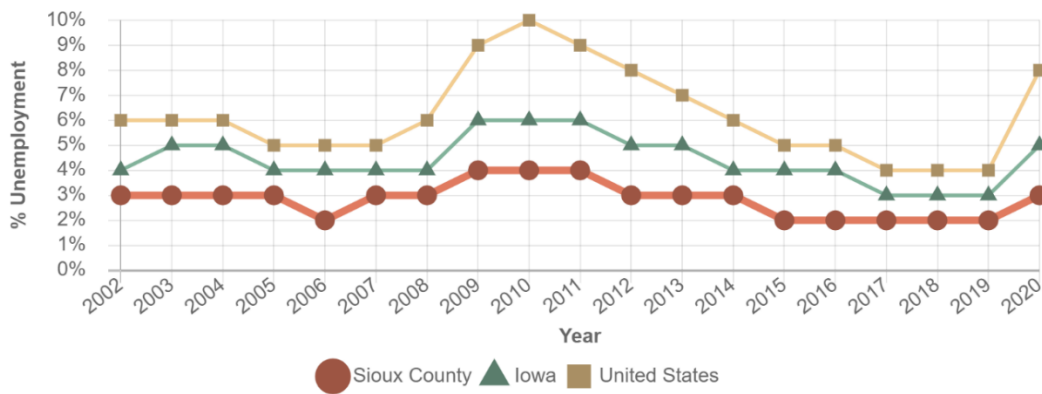
## SOCIAL DETERMINANTS

### EMPLOYMENT<sup>i</sup>

	Sioux County	Iowa	Marion County
Unemployment rate	2.7%	5.3%	4.2%

### Unemployment in Sioux County, IA County, state and national trends

No significant trend was found in Sioux County for this measure.



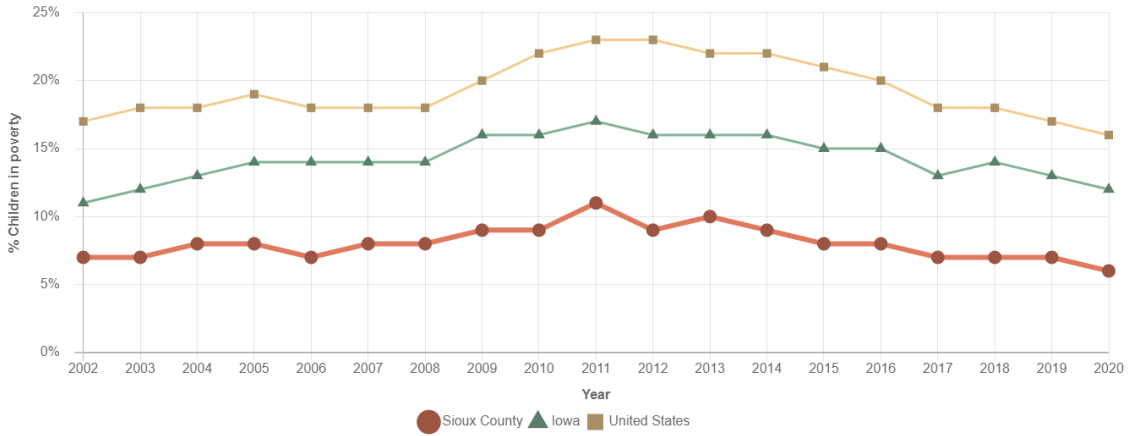
Click on the circle, triangle or square above to show corresponding data points on the county, state and national level.

## SOCIOECONOMIC STATUS [3]

	Sioux County	Iowa	Marion County
Children under age 18 living below the poverty level	6%	12%	4.2%
Students eligible for free and reduced lunch [3]	41%	42%	30%
Severe housing cost burden (50% or more of income) [3]	7%	10%	7%
Food insecurity [3]	5%	9%	8%
Childcare cost burden (as % of median income for household with 2 children)	20%	24%	22%

Children in poverty in Sioux County, IA County, state and national trends

No significant trend was found in Sioux County for this measure.



Notes:  
Prior to 2005, Children in poverty was based on the Current Population Survey; beginning in 2005, it was based on the American Community Survey.

## INCOME [3]

	Sioux County	Iowa	Marion County (peer)
Median household income (2017)	\$74,900	\$62,400	\$61,200

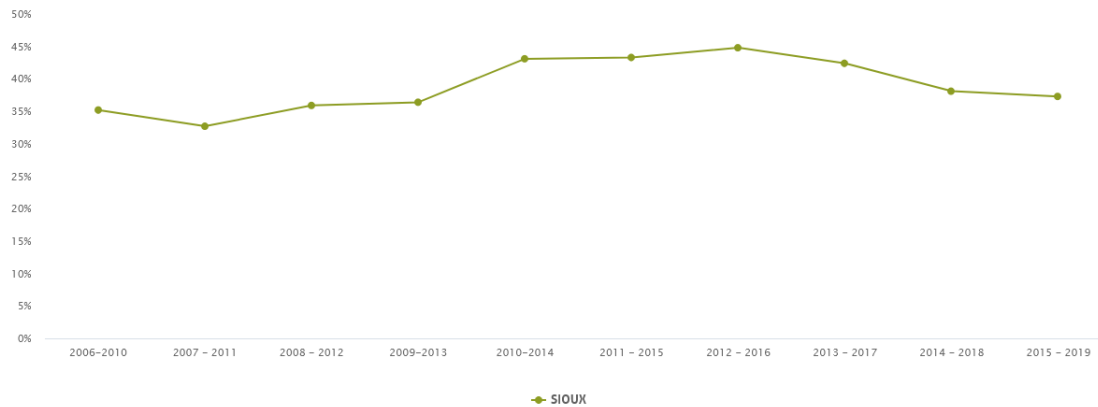
**Sioux County Median Household Income by Ethnicity [3]**

Household Income (Hispanic)	\$42,900
Household Income (American Indian and Alaska Native)	\$68,300
Household Income (White)	\$75,800

**EDUCATION**

	<b>Sioux County</b>	<b>Iowa</b>	<b>Marion County (peer)</b>
High School Graduation [3]	91%	91%	97%
Age 25+ some high school, no diploma [2]	4.7%	4.6%	3.4%
Age 25+ completing less than 9 <sup>th</sup> grade [2]	3.6%	2.9%	2.7%
Bachelor's degree or higher [2]	29.5%	29.3%	30.8%
% of children age 3-4 enrolled in preschool (5 year average 2015-2019)	37.3%	46.6%	31%

PRESCHOOL (PERCENT)



Common Good Iowa from datacenter.kidscount.org

**FAMILY STRUCTURE**

	<b>Sioux County</b>	<b>Iowa</b>	<b>Marion County (peer)</b>
Single parent families [3]	9%	12%	21%
Language other than English spoken at home (% age 5+) [2]	8.5%	8.4%	2.9%
Limited English Proficiency (% age 5+) [4]	4.1%	3.4%	0.8%

## HEALTH INSURANCE

	Sioux County	Iowa	Marion County (peer)
Persons without insurance [3]	7%	6%	4%

## HOUSING

	Sioux County	Iowa	Marion County (peer)
Individuals in a nursing home / assisted living	359	.	390
Individuals in college/university student housing	1837	.	908
Total number of housing units	13,000	.	14,073
Total number of occupied housing units	12,202	.	13,145
Percent of units owner occupied	71.2%	80.6%	73.7%
Occupied housing units lacking complete plumbing facilities	0.1%	0.3%	0.2%
Occupied housing units lacking complete kitchen facilities	1.5	1.7%	0.9%
Median rent	\$736	\$806	\$721

## HEALTH RESOURCE AVAILABILITY

There are four critical access hospitals and one community health center in Sioux County. Total number of available inpatient beds 96, which is 20<sup>th</sup> in rank in Iowa [5].

There are 4 nursing facilities in the county with 288 facility bed; 17.18 FTE temp staff are currently used in Hospital A.

[3]	Sioux County	Iowa	Marion County (peer)
Primary care physicians	1200:1	1350:1	1010:1
Dentists	1950:1	1440:1	1580:1
Mental Health Providers	800:1	570:1	870:1
Percent of population with access to locations for physical activity*	75%	74%	73%

\*reside in a census block that is within a half mile of a park, or reside in an urban census block that is within one mile of a recreational facility, or reside in a rural census block that is within three miles of a recreational facility.

## HEALTH CARE SERVICE USE

Emergency Room visits have increased 24% 2021-2022 – Hospital A

County-wide in 2017 (most current data available) there were 70 alcohol treatment admissions, 42 marijuana treatment admissions, and 141 total substance abuse treatment admissions. [5]

## DEATH, INJURY AND ILLNESS

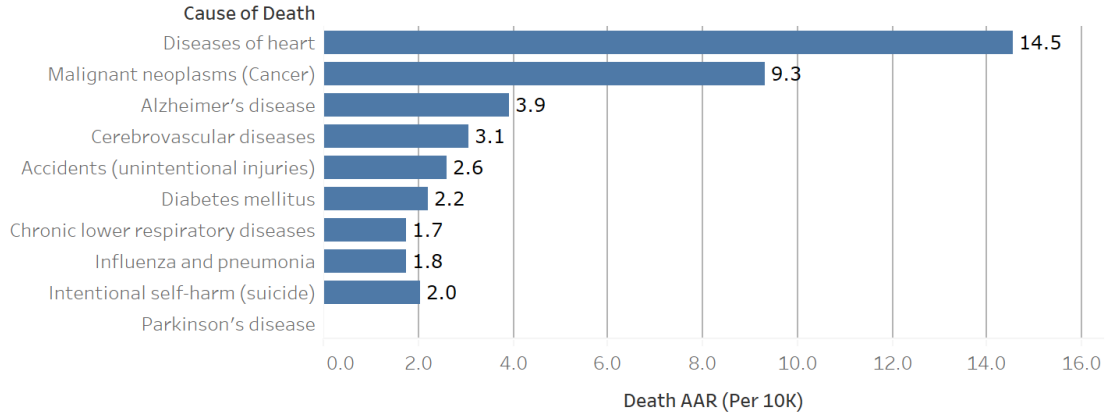
### General Health Status

	Sioux County	Iowa	Marion County (peer)
Fair or poor general health status [3]	14%	14%	13%

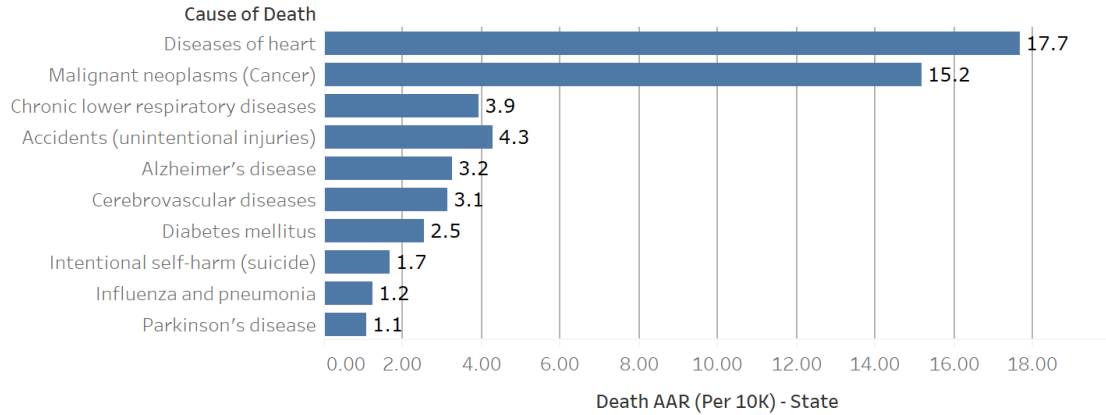
Age-adjusted per 100,000	Sioux County	Iowa	Marion County (peer)
Years of potential life lost before age 75 (per 100,000) [3]	3,600	6,500	6,000
<b>The following are based on data from 2014-2018 [5]:</b>			
All cancer mortality (age-adjusted per 100,000)	114.7	157.7	173.2
Breast cancer mortality	21.8	18.4	19.9
Lung cancer mortality	18.8	40.0	35.6
Colorectal cancer mortality	7.2	13.9	18.6
Skin melanoma cancer mortality	4.5	3.2	*
<b>Chronic obstructive pulmonary disease mortality</b>			
Chronic obstructive pulmonary disease mortality	20.8	46.5	47.1
<b>Heart disease mortality</b>			
Heart disease mortality	113.5	165.5	198.8
<b>Diabetes mellitus mortality</b>			
Diabetes mellitus mortality	14.9	22.5	19.0
<b>Pneumonia/influenza mortality</b>			
Pneumonia/influenza mortality	17.8	13.5	18.5
<b>Stroke mortality</b>			
Stroke mortality	25.2	32.7	35.2
<b>Falls Mortality</b>			
Falls Mortality	6.8	12.9	11.2
<b>Unintentional injuries mortality (all other)</b>			
Unintentional injuries mortality (all other)	7.0	6.8	6.4
<b>Motor vehicle accident death rate</b>			
Motor vehicle accident death rate	9.7	10.5	7.6

### Leading causes of death [7]

**County Top 10 Causes of Death - 2020 Sioux County**



**State Top 10 Causes - 2020**



**Cancer Incidence**

The following are based on data from 2014-2018 [5]:		
	Sioux	Iowa
All cancer incidence (age-adjusted per 100,000)	464.6	484.1
Breast cancer incidence	109.9	132.6
Lung cancer incidence	28.7	62.6
Colorectal cancer incidence	37.4	43.2
Melanoma cancer incidence	48.4	28.1

**MATERNAL AND CHILD HEALTH**

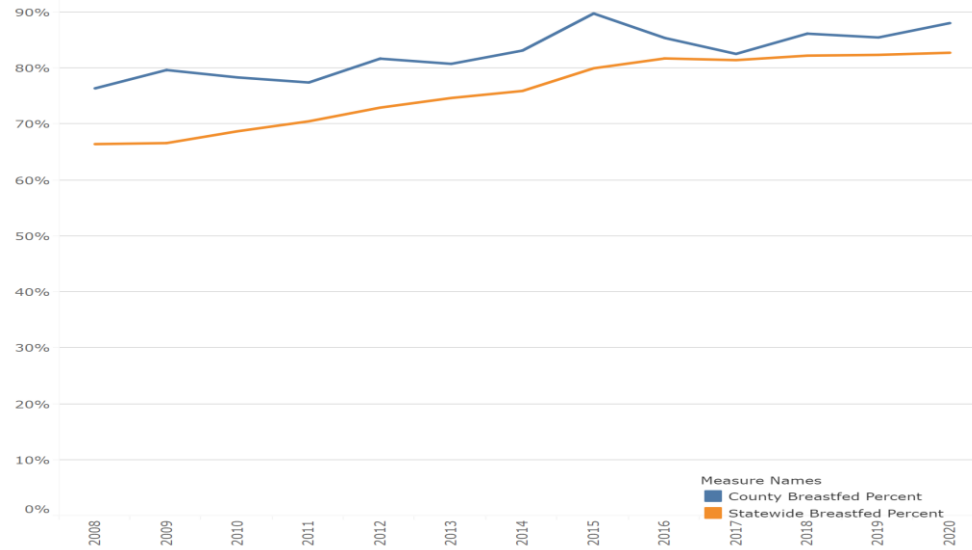
	Sioux County	Iowa	Marion County (peer)



Community Health Partners of Sioux County

Infant Mortality (rate per 1000 births, 2016-2020) [6]	2.86	4.64	6.09
Infants born premature (before 37 weeks) (2020) [6]	7.74%	8.09%	6.50%
Low birthweight [3]	5%	7%	6%
Births to adolescents (age 15-17, per 1000 females age 15-17, 2014-2020) [3]	16	12	16
Infants ever breastfed (2020) [7]	88.1%	82.8%	88.6%

Percent Ever Breastfed Over Time - Sioux County



Social and Mental Health

**Mental Health**

Sioux County adults reported an average of **3.8** days of poor mental health over the past 30 days. In Marion County, adults reported **4.0** days of poor mental health while overall the State of Iowa was **4.1**.

**Child Abuse**

Founded abuse cases (2021) [8]

	<b>Sioux</b>	<b>State of Iowa</b>	<b>Marion (peer)</b>
Total founded cases	49	6966	73

**Suicide**

	<b>Sioux County</b>	<b>Iowa</b>	<b>Marion County (peer)</b>
Suicide death rate (per 100K) [5]	11.5	10	26
Seriously thought about killing oneself in past 12 months – youth [8]	17%	21%	12%
Made a plan about how you would kill yourself – youth [8]	8%	8%	11.6%
Tried to kill yourself in past 12 months – youth	3%	5%	6%

**Emergency room behavioral health admissions**

Hospital A

FY2020 113

FY2021 109

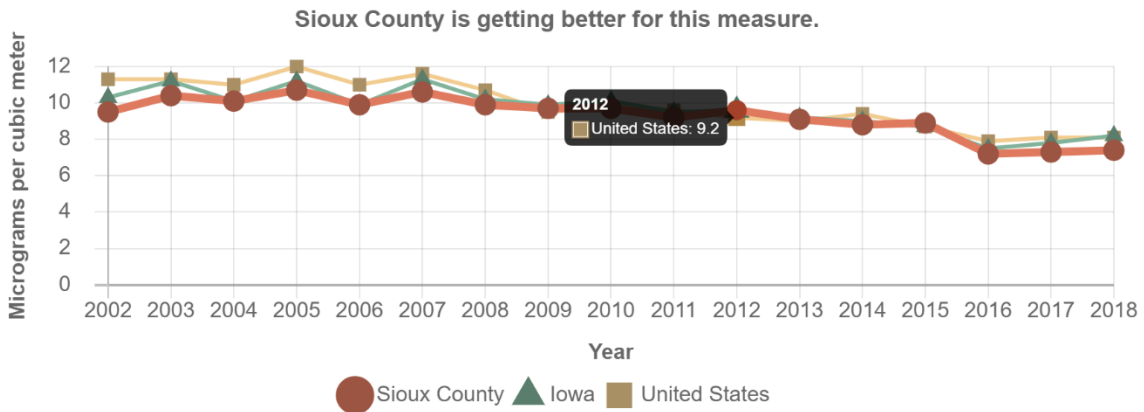
FY2022 133 (annualized to June 30)

# ENVIRONMENTAL HEALTH

## Air Quality

	Sioux County	Iowa	Marion County (peer)
Average daily density of fine particulate matter in micrograms per cubic meter (PM2.5). [3]	7.4	8.2	8.1

**Air pollution - particulate matter in Sioux County, IA**  
**Average density of fine particulate matter: county, state and national trends**



Click on the circle, triangle or square above to show corresponding data points on the county, state and national level.  
 Notes:  
 Data in this trend graph are taken from the Environmental Public Health Tracking Network, and will not match data used in the 2014-2016 Rankings.

# BEHAVIORAL RISK FACTORS

## TOBACCO AND/OR NICOTINE USE

	Sioux County	Iowa	Marion County (peer)
Current smoking – adults [3]	16%	17%	17%
Current smoking – youth [8]	1%	2%	2.1%
Ever smoked or used tobacco (non-electronic)– youth [8]	6%	9%	10%
Used electronic cigarette or other vaping device in past 30 days [8]	11%	10%	14%

\*2017-2020 BRFSS County Estimates

## Drug Use

	Sioux County	Iowa	Marion County (peer)
Marijuana use past 30 days – youth [8]	2%	4%	4%
Ever used marijuana – youth [8]	5%	9%	10%

**Alcohol Use**

	Sioux County	Iowa	Marion County (peer)
Binge Drinking – adults (age-adjusted)*	17.9%	21.8%	22.9%
Heavy Drinking – adults*	6.4%		
Binge Drinking – youth (1 or more days in past 30 days) [8]	4%	5%	5%
Percentage of driving deaths with alcohol involved [3]	21%	27%	56%

\*2016-2019 BRFSS County Estimates

**OBESITY**

	Sioux County	Iowa	Marion County (peer)
Adult overweight and obesity – BMI >25*	70%	71.8%	69.78%
Physical inactivity (adults reporting no leisure time physical activity) [3]	27%	26%	25%
Physical activity (youth grades 6,8,11 reporting 7 days with at least 60 minutes) [8]	26%	27%	31%
No vegetables during past 7 days (youth grades 6,8, and 11) [8]	7%	8%	9%

\*2017-2020 BRFSS County Estimates

**PREVENTATIVE CARE**

	Sioux County	Iowa	Marion County (peer)
Percent of adults who report having a personal doctor or healthcare provider*	75.08%	77.39%	87.56%
Older adult men (age 65+) who are up to date on core preventative services (flu shot past year, PPV shot ever, colorectal cancer screening)	32.7%	28.3%	26.2%
Older adult women (age 65+) who are up to date on core preventative services (flu shot past year, PPV shot ever, colorectal cancer screening, mammogram past 2 years)	28.1%	26%	25.6%

Children age 24 months up to date on immunizations [6]	72.4%	73.3%	87.9%
--------------------------------------------------------	-------	-------	-------

\*2017-2020 BRFSS County Estimates (IDPH)

### Screenings

	<b>Sioux</b>	<b>Iowa</b>	<b>Marion</b>
Mammogram (Medicare enrollees) [3]	56%	49%	56%
Children with Medicaid coverage receiving dental or oral services [7]	58%	.	.

---

[1] U. S. C. 2. R. Data, United States Census Bureau, 2020.

[2] U.S Census Bureau, "State and County QuickFacts. Data derived from Population Estimates, American Community Survey, Census of Population and Housing, State and County Housing Unit Estimates, County Business Patterns, Nonemployer Statistics, Economic Census," Revised July 8, 2014.

[3] C. H. Rankings. [Online].

[5] U. o. Iowa, "Iowa Health Fact Book," [Online]. Available: <https://iowahealthfactbook.org/factbook/#/counties/Sioux>.

[6] C. H. Partners, "IRIS immunization report (May 2022)".

[7] I. D. o. P. Health, "Iowa Public Health Tracking Portal," [Online]. Available: <https://tracking.idph.iowa.gov/>.

[8] I. D. o. H. Services, "Iowa Child Abuse Report," Prevent Child Abuse Iowa, Des Moines, IA, 2021

[9] I. D. o. P. Health, "Iowa Youth Survey Sioux County Report -84," Iowa Department of Public Health, Des Moines, 2018.